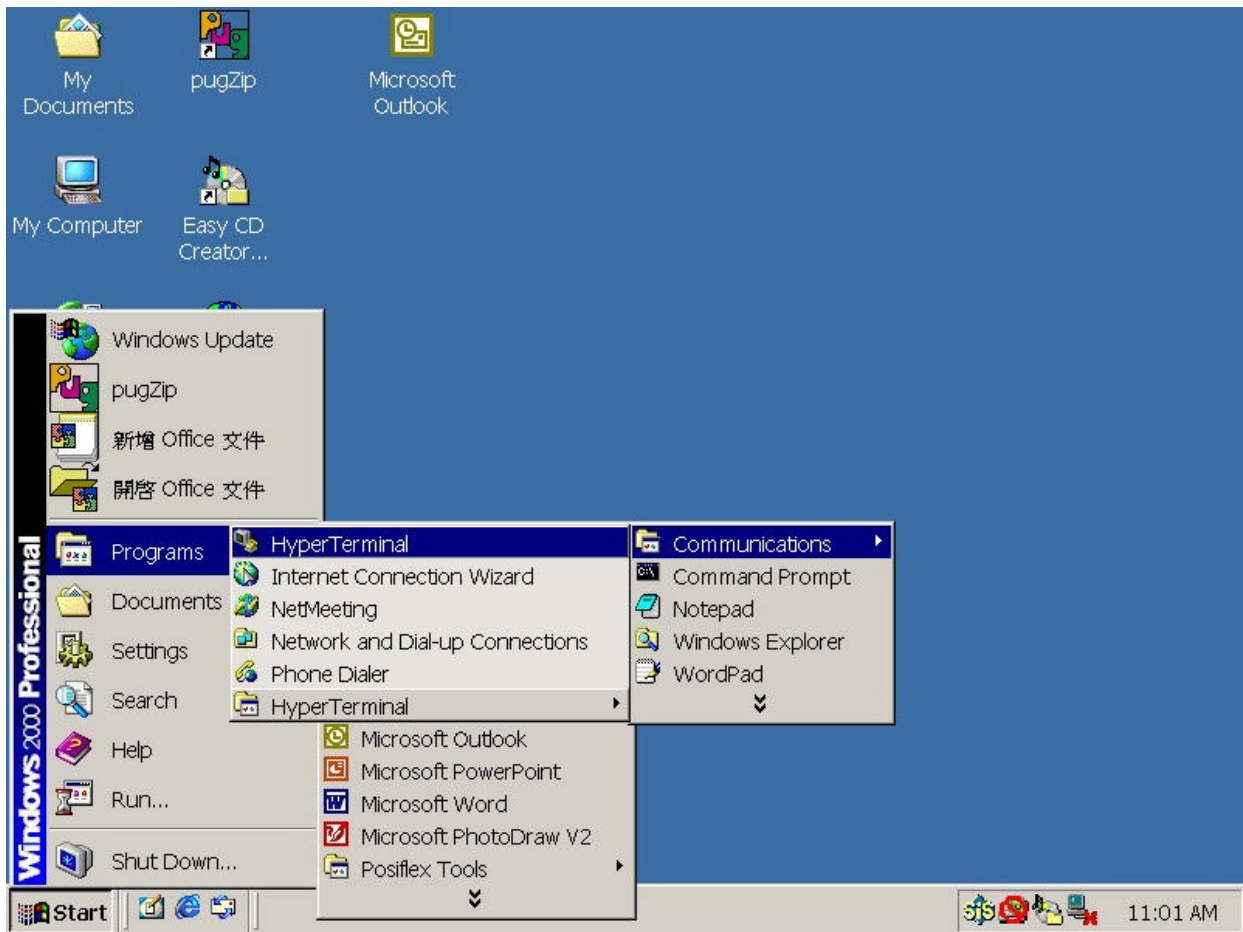


I-Button Configuration Setting

Followings are sample pictures for configuration procedure of iButton reader in Windows followed with some descriptive text.



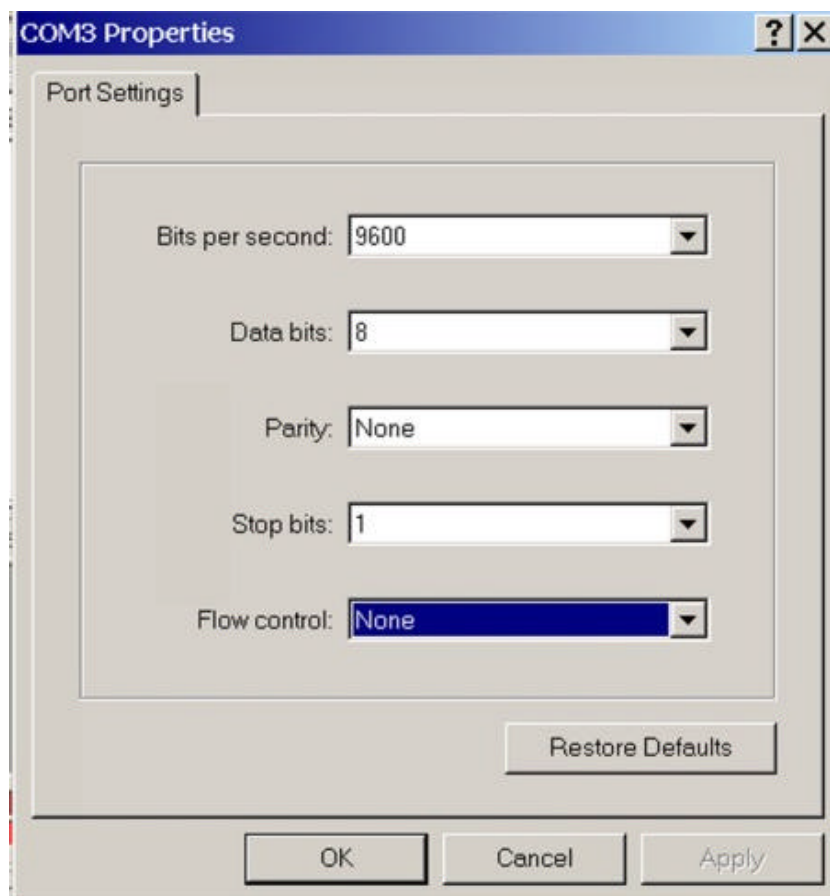
To program the I-Button configuration, please select “Start” => “Programs” => “Accessories” => “ Communications” => “Hyper Terminal”.



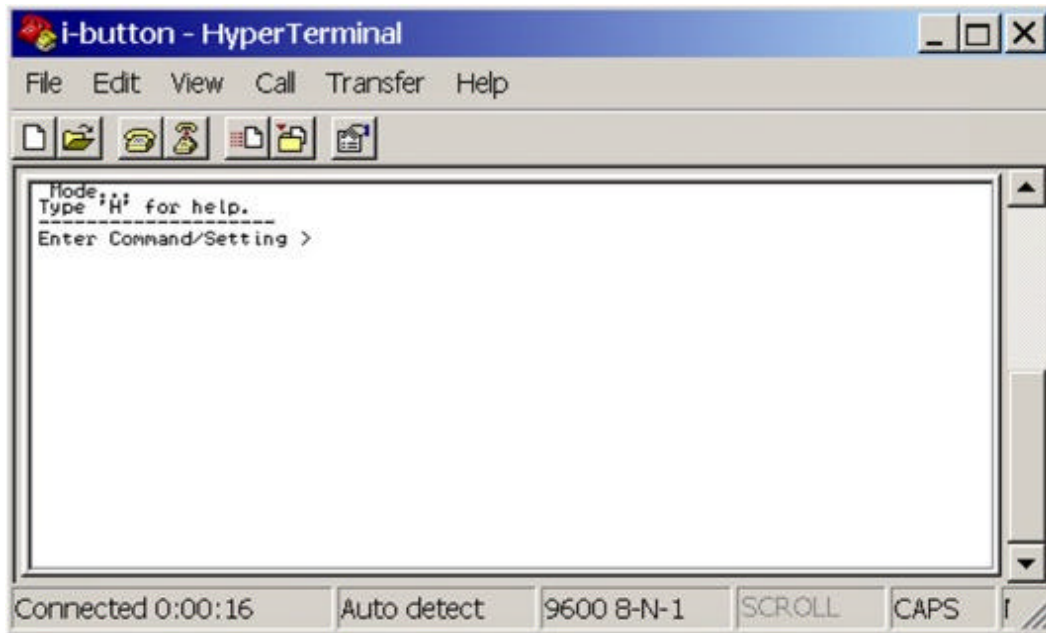
Assign a connection name for this job.



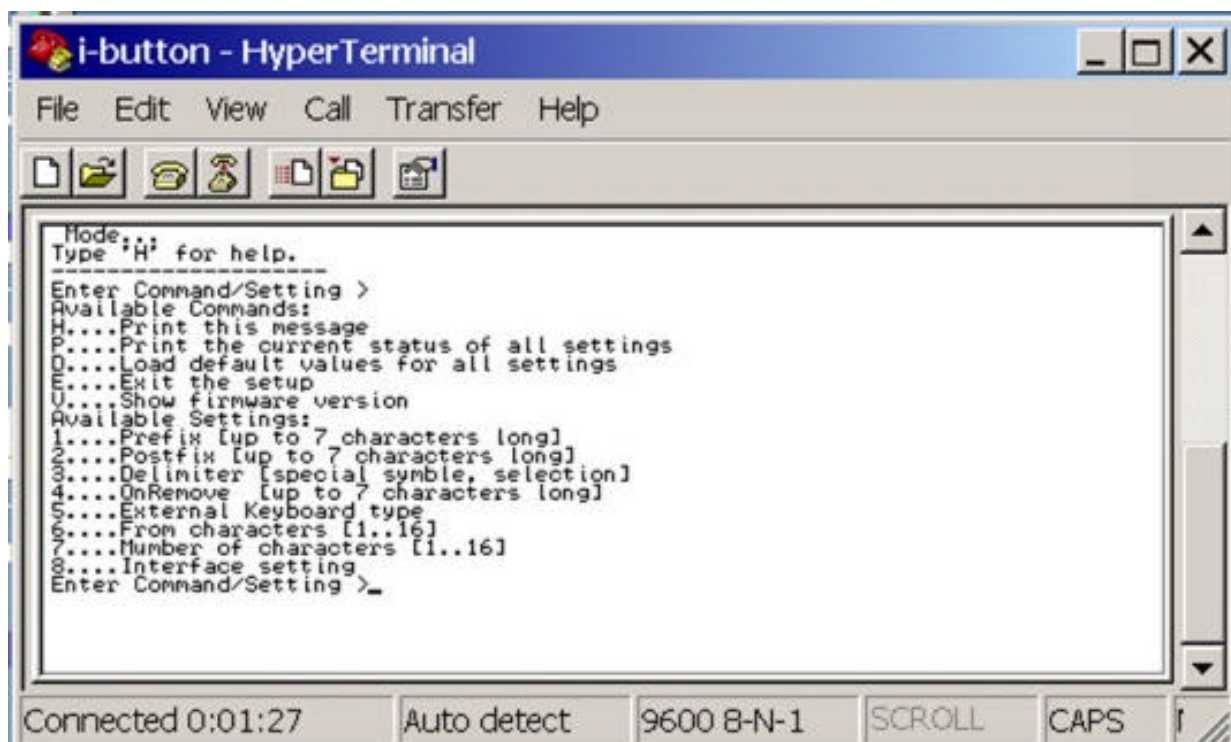
Select the port where I-Button is connected to.



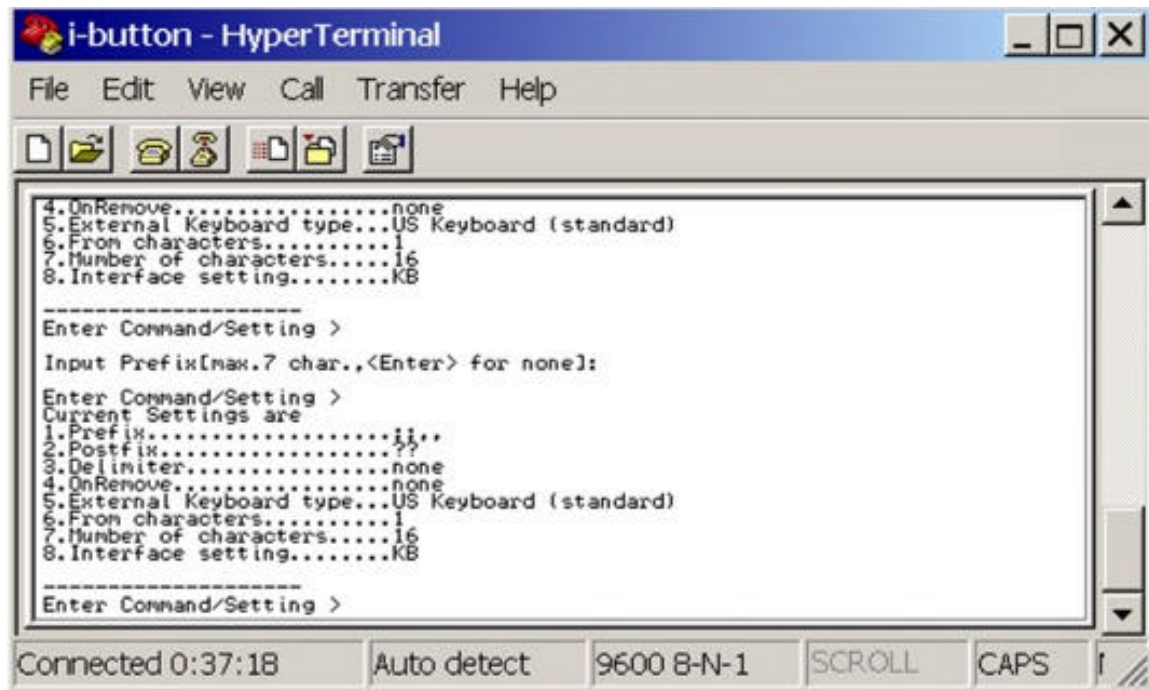
Set the port setting to 9600, n, 8, 1 and Flow control set to “Hardware”



Under this screen, type “SETUP” (in capitalized characters and note that this word won’ t show up on screen) and press “enter”, then you can see some message showing on the screen like above.



Press “H” and then the screen will show all available commands and settings.



Press “P” to show the I-Button current configuration. In item 8, the Interface setting should be “KB”. If not, please press “8” to change the setting.

Then press “E” to conclude the setup.

Comments on Application of iButton Reader:

Due to structural conditions following comments are observed.

1. Some market available keyboard may fail to work when connected to the iButton reader (with another keyboard plug of iButton reader connected to PC). In this case, it is suggested to use another brand of keyboard. If there is no workable PS/2 keyboard available, it is recommended to use an USB keyboard instead.
2. POSIFLEX programmable keyboards are found working all right when connected to iButton reader as described above. However, to program the programmable keyboard, the connection sequence must be revised that the programmable keyboard is connected to PC directly with the iButton reader connected after the programmable keyboard or the programmable keyboard should be programmed separately before use. Otherwise, the programming commands will be intercepted by the iButton reader and result in unpredictable consequences.